

# Child Psychiatry Access Network (CPAN)

## What is CPAN?

- One-fourth to one-third of the pediatric cases you see each day involve mental health concerns.
- You may not feel adequately trained to address these issues and, even if you do, they can be very time-consuming.
- The Texas Legislature funded CPAN to offer you free consultation and continuing education to help improve the quality of care you are able to offer pediatric patients with mental health concerns.

## What Free Services Does CPAN Offer? 1-888-901-2726(CPAN)



*Telephonic clinical consultation during business hours with a child psychiatrist or mental health clinician.*



*Care coordination for assistance with referrals to community mental health services.*



*Continuing professional education designed for pediatric primary care providers.*

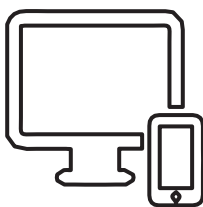
## What are the Goals of CPAN?

- For individual primary care providers: Prompt access to a child psychiatrist for phone consultation on medication questions, including follow-ups
- For practices that have behavioral health clinicians: Expert consultation on difficult cases
- For pediatric health homes: Help to fully incorporate behavioral services into the practice through access to a child psychiatrist
- For patients needing specialized care: Help to identify resources for evaluation and ongoing care

## How does CPAN Service Work?

**Contact your CPAN Coordinator to Enroll: Janet Thompson 682-299-5995  
JThomps04@jpshealth.org**

Register by phone or email



We will let you know when free CMEs are available to you



Call **888-901-CPAN (2726)**

Press **1** For the North and North East Regions

Press **1** again For UNT Health Science Center in Fort Worth