

ISSUES	
1	
2	
3	
4	
5	
REVISIONS	



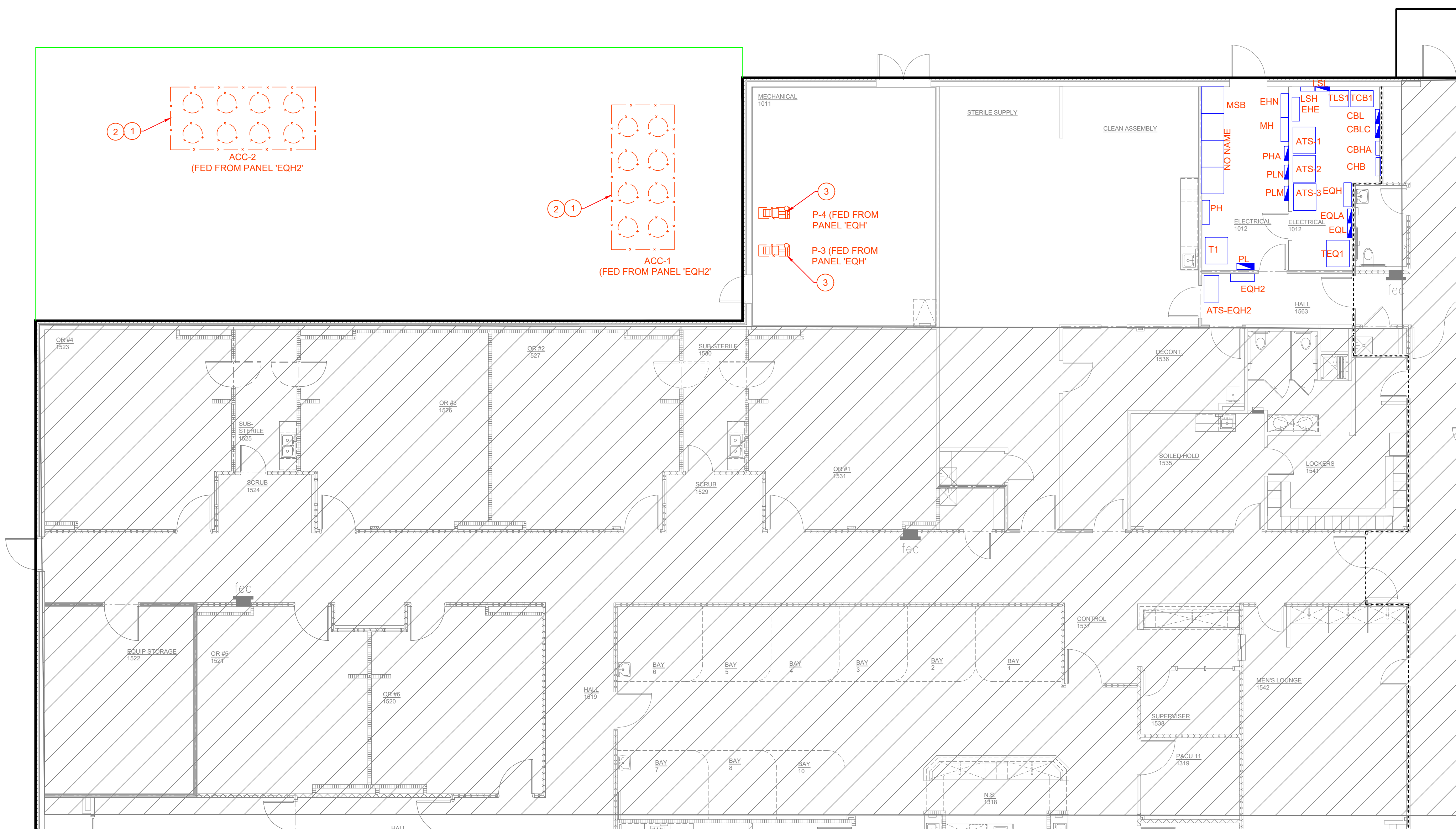
11/05/2025

**JPS ARLINGTON SURGERY
OR HVAC REPLACEMENT PROJECT
4400 NEW YORK AVE.
ARLINGTON, TX 76018**

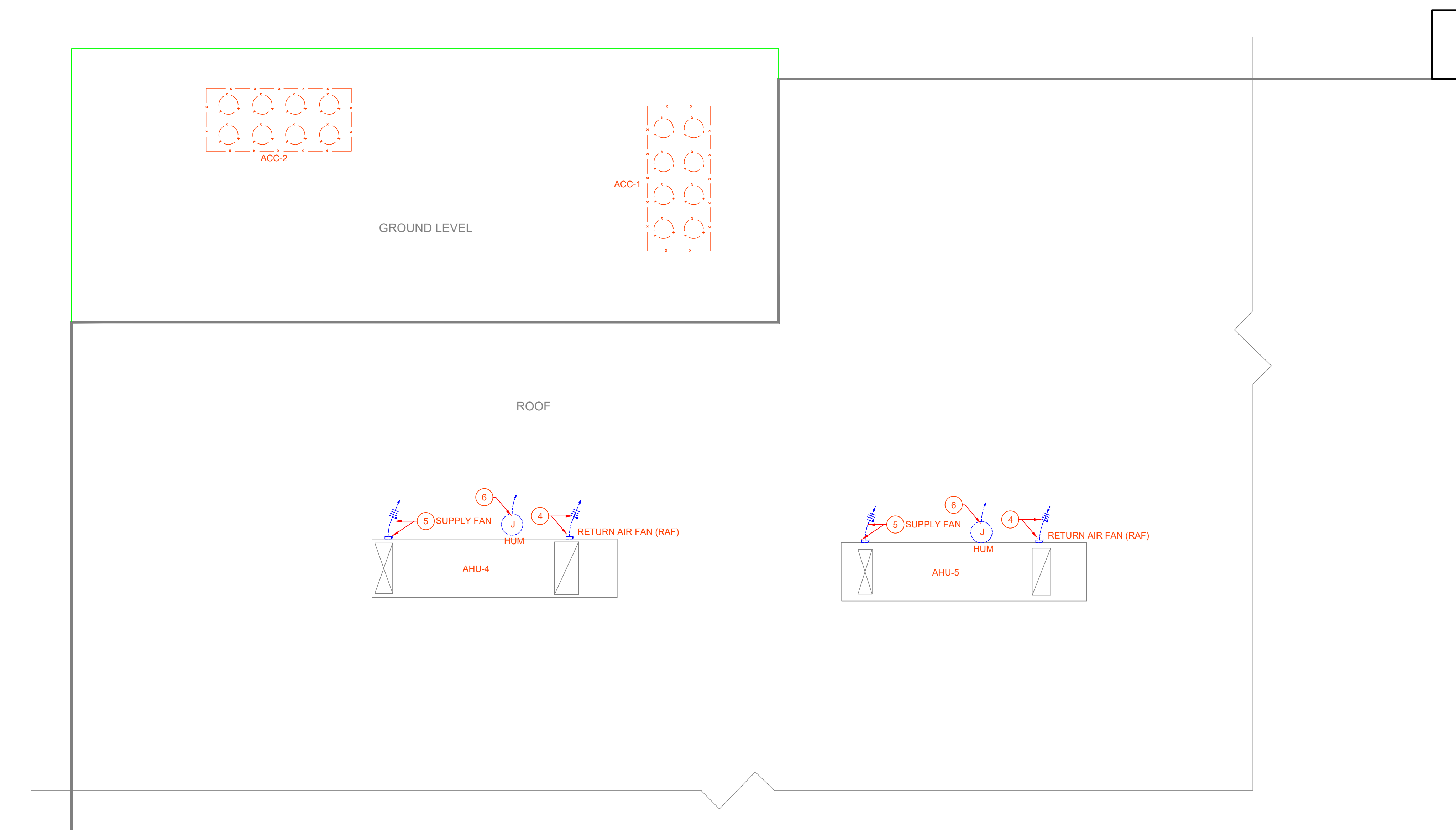
PROJECT #: 05194.09

SHEET TITLE:
PARTIAL
ELECTRICAL
DEMOLITION PLAN
SHEET #:

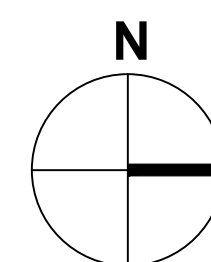
E-011



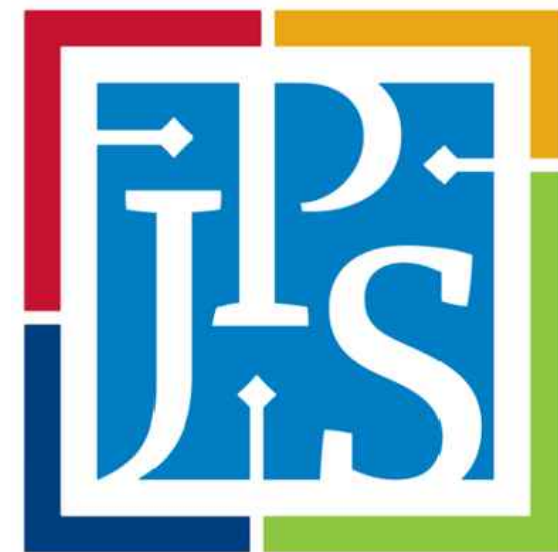
01 PARTIAL ELECTRICAL DEMOLITION PLAN
SCALE: 1/8" = 1'-0"



02 PARTIAL ELECTRICAL DEMOLITION ROOF PLAN
SCALE: 1/8" = 1'-0"



- GENERAL NOTES:**
- REFER TO SHEET E-001 FOR LEGEND, ABBREVIATIONS, AND GENERAL PROJECT NOTES.
 - VERIFY EXACT LOCATIONS FOR HVAC EQUIPMENT WITH MECHANICAL DRAWINGS.
 - ALL ELECTRICAL PANELS AND TRANSFORMERS ARE EXISTING TO REMAIN.
- ELECTRICAL DEMOLITION KEYED NOTES:**
- DISCONNECT ELECTRICAL CONNECTION TO THE EXISTING CHILLER. REMOVE DISCONNECT. REMOVE CONDUIT AND WIRING BACK TO POWER SOURCE. REFER TO SHEET E-301 FOR CIRCUITING.
 - EXISTING LOW VOLTAGE CIRCUITS (RECEPTACLE, HEAT TRACE, ... ETC) TO REMAIN. SUPPORT HUMIDIFIER AND RECEPTACLE AND REINSTALL.
 - DISCONNECT ELECTRICAL CONNECTION TO THE EXISTING ELECTRICAL PUMP. REMOVE CONDUIT AND WIRING BACK TO POWER SOURCE.
 - DISCONNECT ELECTRICAL CONNECTION TO THE EXISTING AIR HANDLING UNIT (AHU) RETURN AIR FAN. REMOVE DISCONNECT SWITCH. CONDUIT, AND WIRING BACK TO POWER SOURCE. REMOVE EXISTING 3P/30A RFA CIRCUIT BREAKER IN PANEL 'EQH'.
 - DISCONNECT ELECTRICAL CONNECTION TO THE EXISTING AIR HANDLING UNIT (AHU) SUPPLY AIR FAN. REMOVE DISCONNECT SWITCH. CONDUIT, AND WIRING BACK TO POWER SOURCE. REMOVE EXISTING 3P/30A RFA CIRCUIT BREAKER IN PANEL 'EQH'.
 - DISCONNECT ELECTRICAL CONNECTION TO THE EXISTING HUMIDIFIER. REMOVE DISCONNECT SWITCH. CONDUIT, AND WIRING BACK TO POWER SOURCE. REMOVE EXISTING CIRCUIT BREAKER IN PANEL 'MH'.



ISSUES	
1	
2	
3	
4	
5	
REVISIONS	



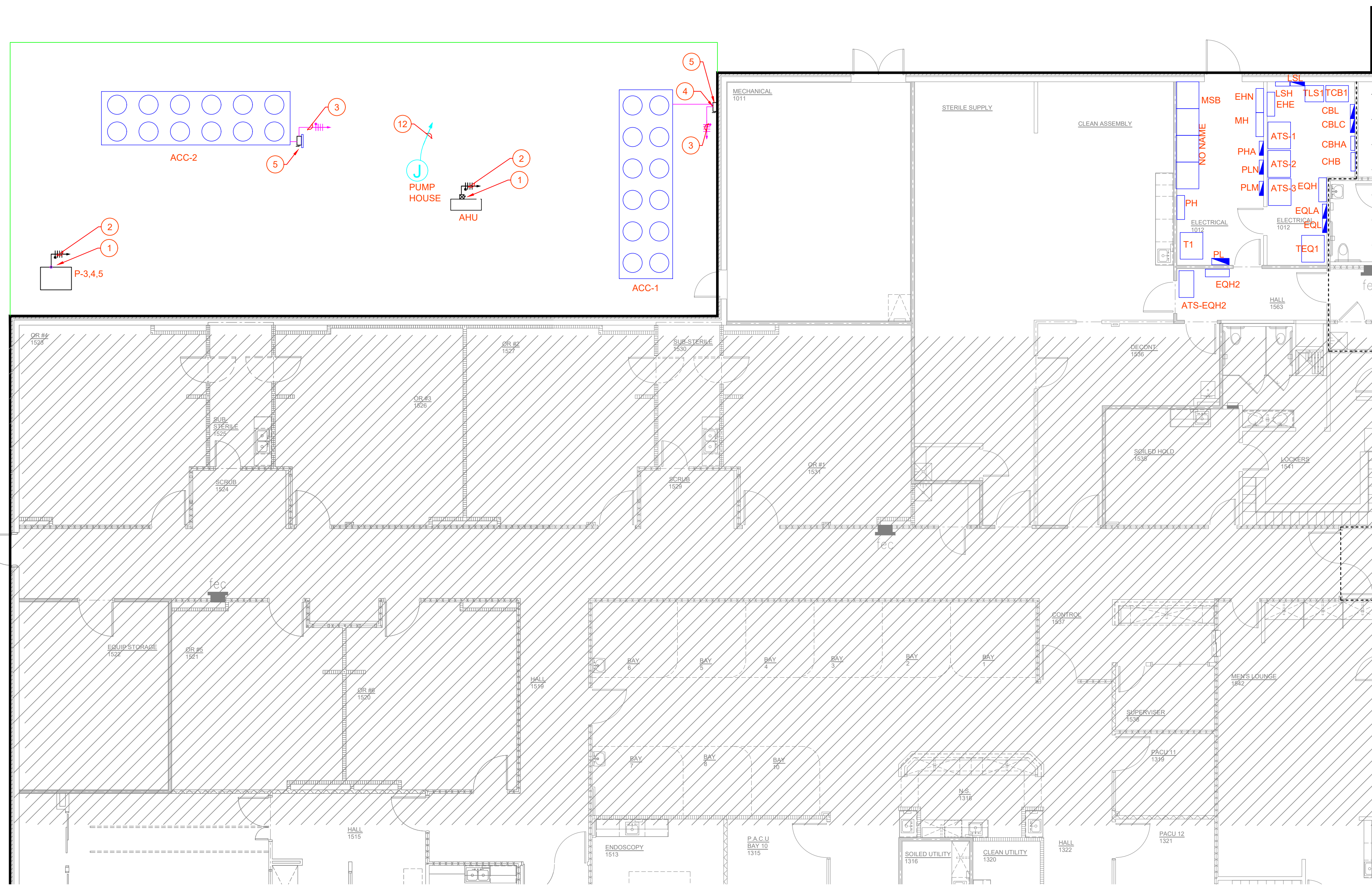
11/05/2025

**JPS ARLINGTON SURGERY
OR HVAC REPLACEMENT PROJECT
4400 NEW YORK AVE.
ARLINGTON, TX 76018**

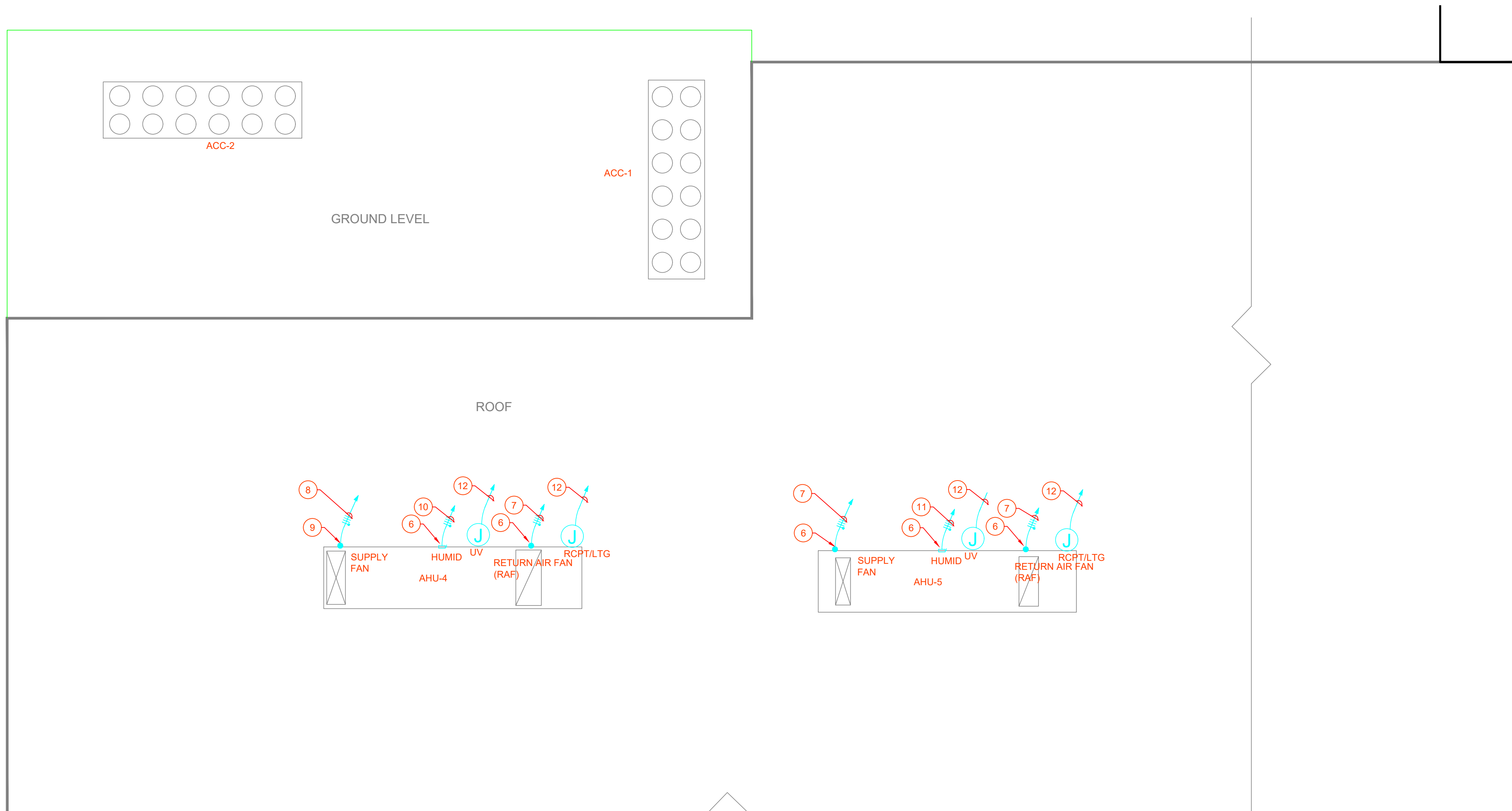
PROJECT #: 05194.09

SHEET TITLE:
PARTIAL
ELECTRICAL
PLAN
SHEET #:

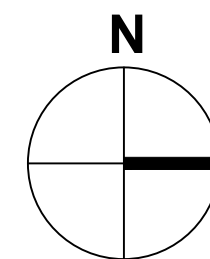
E-111

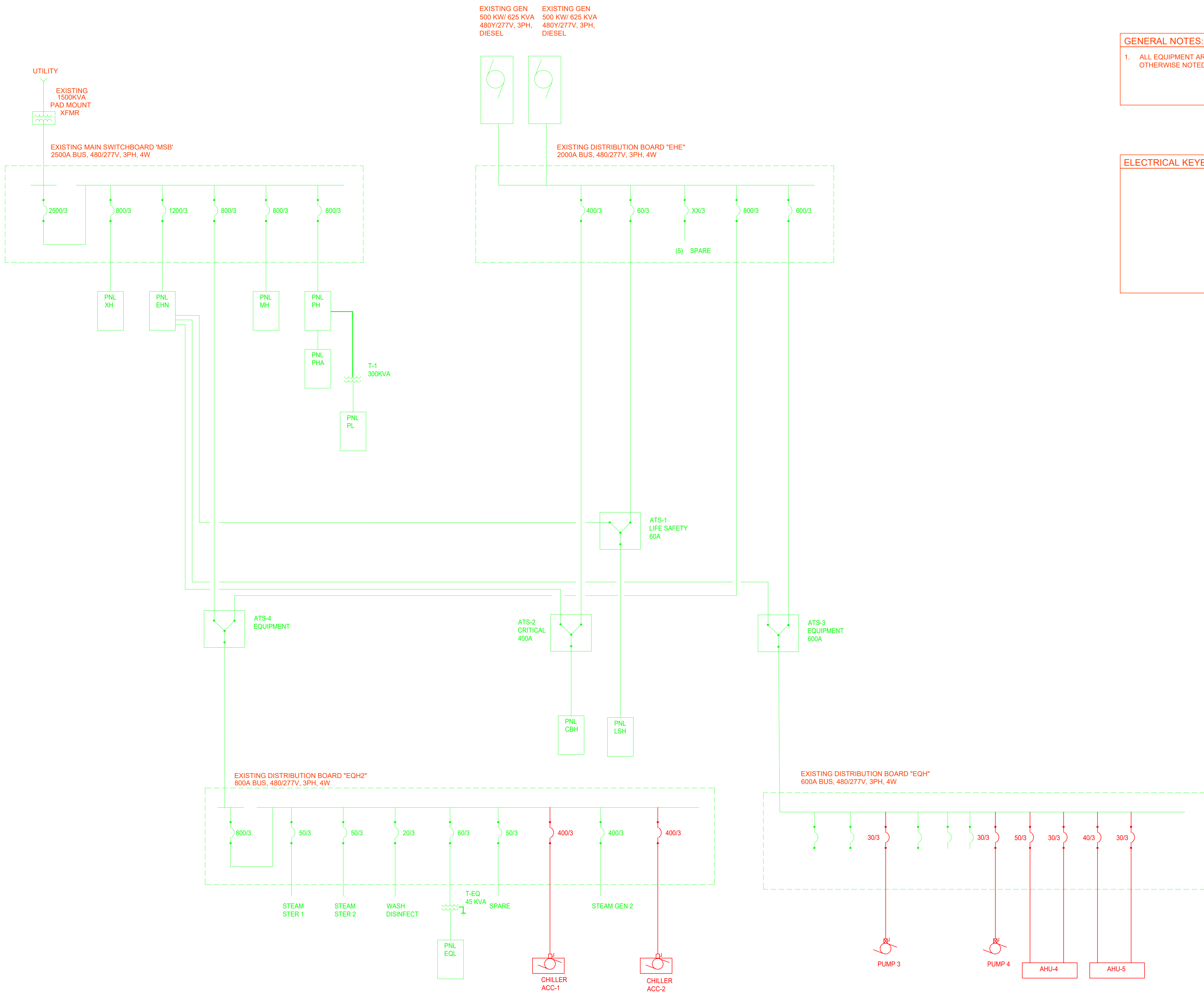


01 PARTIAL ELECTRICAL PLAN
SCALE: 1/8" = 1'-0"



02 PARTIAL ELECTRICAL ROOF PLAN
SCALE: 1/8" = 1'-0"

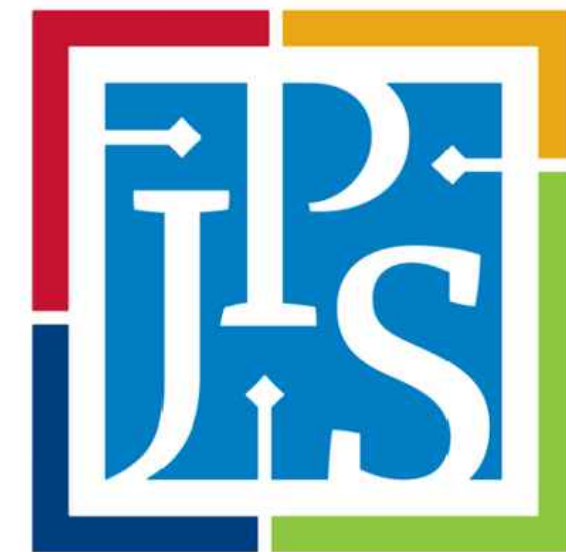




GENERAL NOTES:

1. ALL EQUIPMENT ARE EXISTING TO REMAIN UNLESS OTHERWISE NOTED.

ELECTRICAL KEYED NOTES:



ISSUES	
1	
2	
3	
4	
5	
6	
REVISIONS	



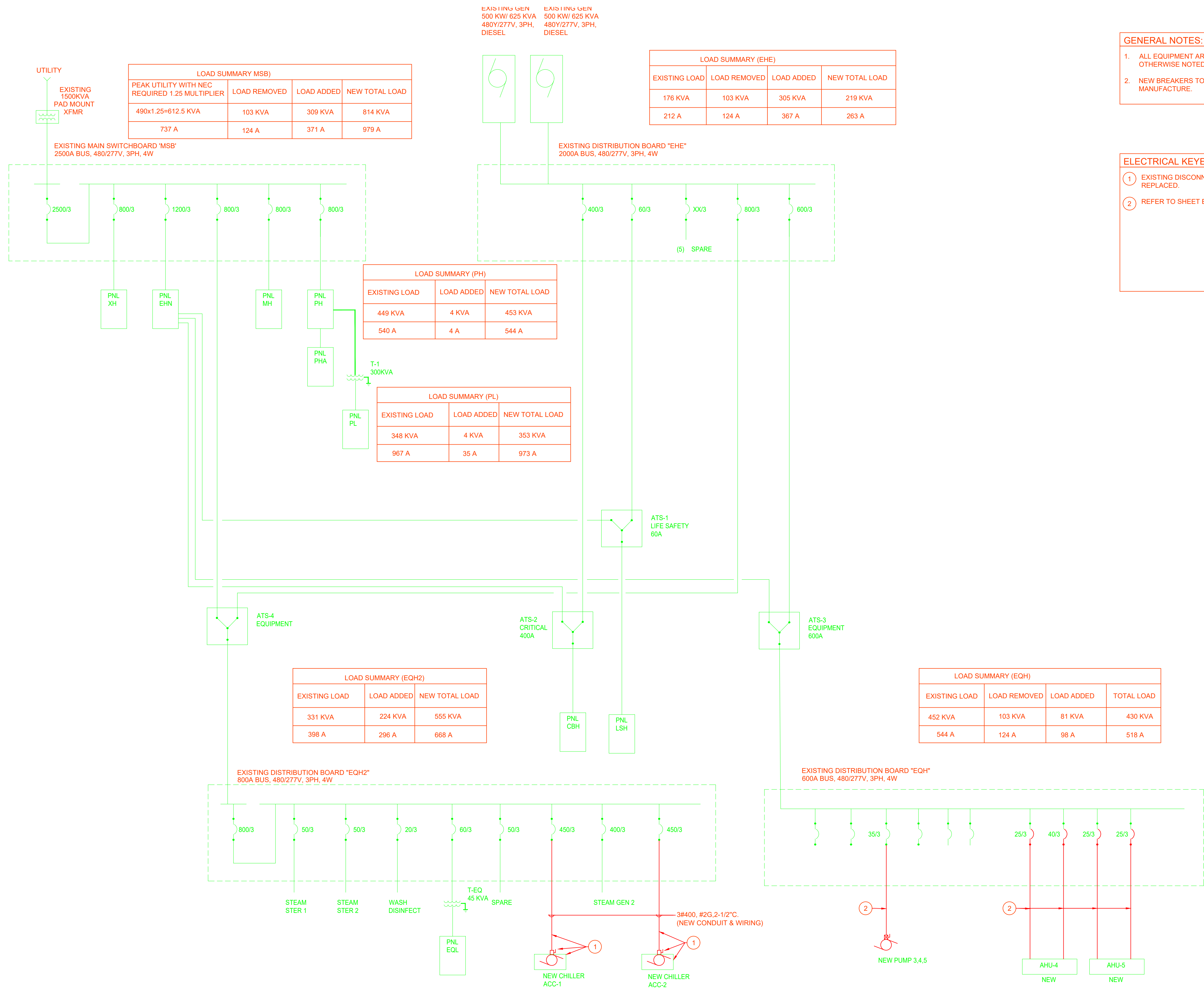
11/05/2025

**JPS ARLINGTON SURGERY
OR HVAC REPLACEMENT PROJECT
4400 NEW YORK AVE.
ARLINGTON, TX 76018**

PROJECT #: 05194.09

SHEET TITLE:
PARTIAL
ELECTRICAL
DEMOLITION 1LINE
SHEET #:

E-301



GENERAL NOTES:

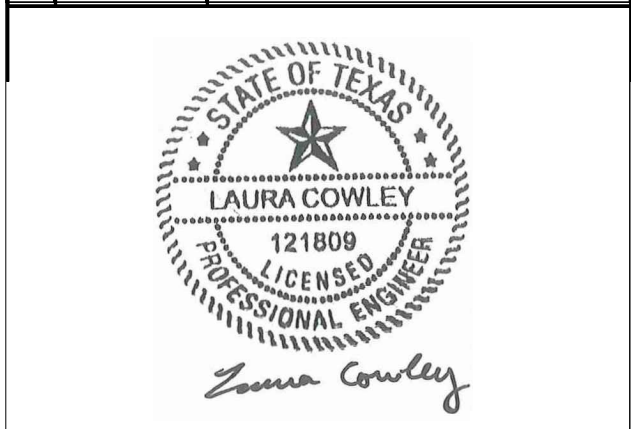
- ALL EQUIPMENT ARE EXISTING TO REMAIN UNLESS OTHERWISE NOTED.
- NEW BREAKERS TO MATCH EXISTING BREAKER TYPE AND MANUFACTURE.

ELECTRICAL KEYED NOTES:

- EXISTING DISCONNECT, CONDUIT AND WIRING TO BE REPLACED.
- REFER TO SHEET E-011 FOR MORE INFORMATION.



ISSUES	
1	
2	
3	
4	
5	
6	
REVISIONS	



11/05/2025

**JPS ARLINGTON SURGERY
OR HVAC REPLACEMENT PROJECT
4400 NEW YORK AVE.
ARLINGTON, TX 76018**

PROJECT #: 05194.09

SHEET TITLE:
**PARTIAL
ELECTRICAL NEW
1LINE**

SHEET #:

E-302