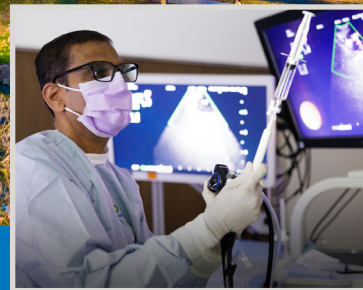




JPS Health Network
Fort Worth, Texas



Transforming the Communities We Serve

2025 report to the community

Table of Contents

About JPS Health Network 6

Transforming Care Delivery 12

Transforming Lives Across Tarrant County 16

Transforming Healing Environments..... 18

Transforming Innovation 20

Transforming Excellence into Recognition 22

Transforming Learning into Lifelong Impact 24

Transforming Talent into Purpose-Driven Care 26

Transforming Partnership into Healthier Communities..... 32

Transforming Giving into Impact 34

Transforming Community Investment Into Meaning..... 36

Transformed: Looking Ahead..... 38

Fort Worth downtown cover photo and photo on pages 30-31:
© Charles Davis Photography

To Our Community



This Report to the Community reflects the dedication, expertise, and compassion that define JPS Health Network. We continue to advance our leadership in shaping the future of healthcare, always focused on delivering high-quality, patient-centered care. Our work is more than a mission; it is a movement, guided by a bold vision for what healthcare can and should be. At the heart of it all is our belief in the dignity and worth of every patient, ensuring they are heard, seen, and valued in every interaction.

At JPS Health Network, we are building a future where compassionate, high-quality care is always within reach. Our mission is rooted in access and excellence, and today that mission is taking shape in powerful ways across Tarrant County.

Every milestone we reach, from the opening of a new medical home to the advancement of our teaching and research programs, represents our commitment to the people we serve. The Master Facility Plan is no longer a vision on paper; it’s rising around us in the form of new care environments designed to meet patients with dignity and purpose. The Psychiatric Emergency Center is the only one of its kind in the region, and the Medical Home Southwest Tarrant is expanding access to thousands of families.

Our team continues to lead with compassion and expertise. We are strengthening maternal health outcomes, deepening our partnerships to address food and housing insecurity, and investing in digital tools that bring care closer to home. From clinical innovations to workforce pipelines, JPS is advancing the way healthcare works, so that more people get the care they deserve, when and where they need it.

At the center of this momentum is a simple truth: our patients are our true north. Their voices and their experiences continue to guide everything we do. This report reflects the strength of our team, the trust of our community, and the strategic progress we are making together.

Thank you for believing in our purpose. The best of JPS is not behind us—it’s being built every day.

Karen Duncan, MD

President and Chief Executive Officer
JPS Health Network



Transforming Access

The Tarrant County Hospital District, known as JPS Health Network, is a trusted healthcare leader in Tarrant County, delivering compassionate, high-quality care to all who need it, regardless of insurance status or ability to pay. With a 582-bed hospital, more than 25 community-based clinics, and a team of over 7,200 professionals, JPS provides comprehensive services that include trauma care, behavioral health, maternal and neonatal care, primary and specialty medicine, and more. As the region's largest teaching institution and the most comprehensive provider of behavioral health services in the county, JPS stands at the intersection of access, innovation, and community trust.

About JPS Health Network

Our Mission

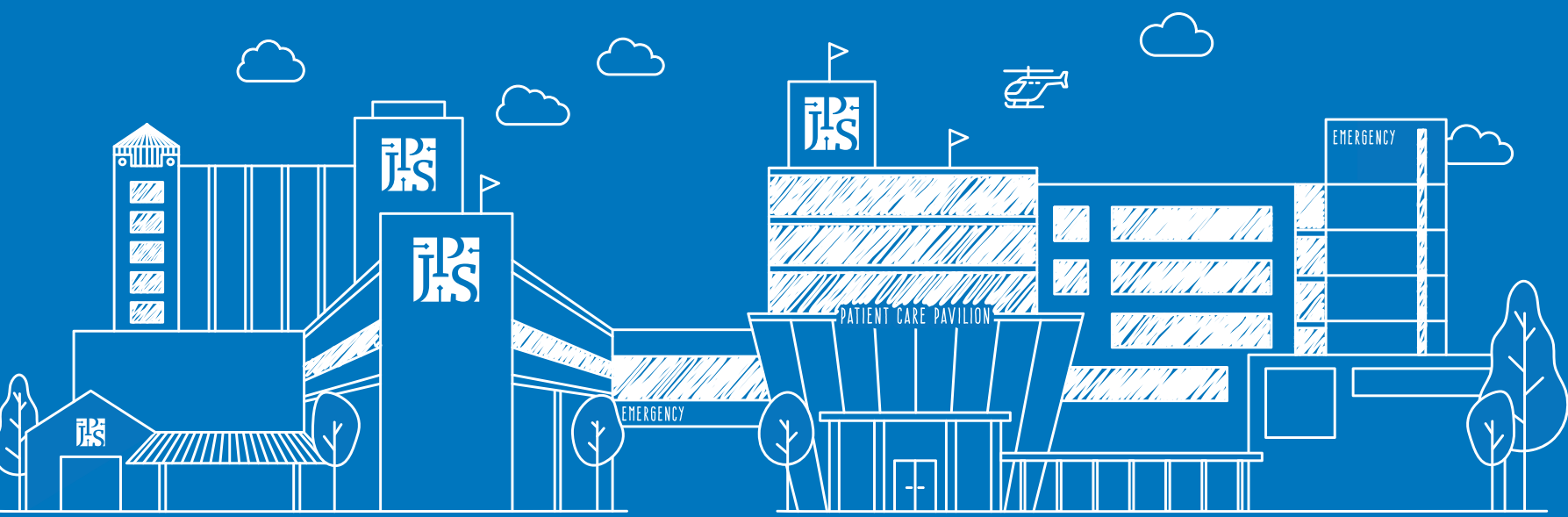
Our mission is to transform healthcare delivery for the communities we serve.

Our Vision

Our vision is to be a regional and national leader in improving the patient and family experience, the quality and outcomes of population health, and access to care.

Our Values

- Trust
- Mutual Respect
- Excellence
- Integrity
- Accountability
- Teamwork



Our History

In October 1877, future Fort Worth mayor John Peter Smith deeded five acres at what is now 1500 South Main Street to provide a place where individuals from Fort Worth and Tarrant County “could have the best of medical care.” His vision would take years to fully realize, but the community’s first public hospital arrived sooner.

In 1906, a hospital affiliated with the Fort Worth Medical College opened, free to all accident cases and others accepted by the authorities, laying the foundation for JPS Health Network. Seven years later, county commissioners agreed to match city funds for a joint hospital, which opened with 25 beds.

By 1938, the downtown site could no longer meet the region’s needs, and construction began on the donated land. The 166-bed City-County Hospital met many challenges, including the polio epidemic, and served as the main trauma center for Tarrant County.

In 1954, it was officially named John Peter Smith Hospital, and in 1959 the Tarrant County Hospital District was formed to provide financial stability.

The 1970s and 1980s brought major expansion, and by the 1990s, new health centers were opening across the county. We are proud of our history and committed to the next century of care and service.

Today

Today, JPS Health Network continues to meet the needs of Tarrant County families, improving health and expanding access under the guidance of an 11-member Board of Managers, appointed by the Tarrant County Commissioners Court. The Board provides strategic oversight and approves the hospital district’s annual budget before it goes to the Commissioners Court, which gives final budget approval and sets the property tax rate that supports hospital district operations.



At a Glance: Our Impact

JPS Health Network delivers care at every stage of life and in every corner of Tarrant County. From our 582-bed hospital and 25+ community clinics to one of the busiest emergency departments in the nation, our footprint is built to meet the needs of a growing, diverse community. We are home to lifesaving trauma services, advanced maternal and neonatal care, comprehensive behavioral health, and programs that prepare the next generation of healthcare leaders.

The numbers on this page tell a powerful story — 7,200+ team members united in purpose, nationally recognized training programs, critical designations that set the standard for quality, and hundreds of volunteers giving their time and heart. Each figure reflects a shared commitment to delivering exceptional care and ensuring every patient is seen, heard, and valued.



When Kimberlea arrived at JPS after being diagnosed with stage four lung cancer, she was overwhelmed and searching for hope. What she found was a team ready to fight for her. "They acted fast, treated the whole me, and gave me more life than I ever expected," she says. "JPS didn't just treat my cancer—they helped me find my strength."



582-bed hospital
and **25+ clinics**
across Tarrant
County



A **Level I Trauma**
Center and
Psychiatric
Emergency Center



Level IV
Maternal Care
Facility



Level III
Neonatal
Intensive Care
Unit



19 residencies and
fellowships with the
largest family medicine
residency program in
the U.S.



13th busiest
Emergency
Department
in the nation



ANCC
Pathway to
Excellence®
nursing
designation



7,200+
team members and
250 community &
student volunteers
across JPS Health
Network



206 languages
translated
at JPS



580+
Acclaim Health
Providers

A map of Dallas County divided into four colored regions: North Central (light blue), Northeast (medium blue), West (teal), and Southeast (green). Major highways are shown as white lines with shields indicating route numbers (e.g., 287, 35W, 820, 121, 183, 360, 20, 377, CTP). Cities labeled include Azle, Fort Worth, Benbrook, Haltom City, North Richland Hills, Colleyville, Bedford, Hurst, Euless, Grapevine, Arlington, and Mansfield. A cluster of 15 numbered blue dots is located south of Fort Worth, near the intersection of I-35W and I-820. A north arrow and the text "MAP NOT TO SCALE" are in the bottom left corner.

- Behavioral Health
- Dental

17



Transforming Care Delivery

JPS Health Network delivers a broad spectrum of high-quality services, designed to meet the evolving needs of our patients and community.

Level I Trauma Leader



JPS Health Network is home to Tarrant County's longest-running Level I Trauma Center, recently re-verified by the American College of Surgeons and recognized for providing the highest level of emergency care. Available 24/7, the trauma team includes trauma surgeons, specialists, and support staff trained to respond within minutes to life-threatening injuries. As a teaching hospital, JPS not only delivers expert care but also trains the next generation of emergency medicine professionals—ensuring our community receives rapid, coordinated, and advanced trauma care when it matters most.

In addition, JPS actively participates in trauma-related research, advancing evidence-based practices that improve patient outcomes locally and contribute to national best practices.

JPS is also a leader in trauma prevention education, gun violence intervention, and community paramedicine, ensuring that care continues even after the crisis ends.

"During my time as chief, I saw the profound impact of JPS's Level I Trauma Center. Having that full spectrum of care available in Fort Worth means critical patients receive lifesaving treatment immediately, which has made a real difference in survival rates and in supporting our community's safety."

- Chief Neil Noakes (Ret.), Fort Worth Police Department





Primary Care

Primary care at JPS serves as the foundation for lifelong health, providing preventive services, chronic disease management, and acute care across a network of 25+ medical homes and community health centers throughout Tarrant County. Physicians, advanced practice providers, and care teams build lasting relationships with patients, offering routine screenings, immunizations, and personalized care plans. With coordinated access to specialty services and integrated behavioral health support, JPS primary care ensures patients receive the right care, in the right place, at the right time.

Cancer Care Services

JPS provides comprehensive cancer care through a coordinated team of oncologists, surgeons, nurses, clinicians, specialists and support staff who guide patients from diagnosis through

survivorship. Services include advanced diagnostics, surgical oncology, chemotherapy, radiation therapy, and access to clinical trials—ensuring patients benefit from the latest evidence-based treatments. Multidisciplinary tumor boards bring experts together to develop personalized care plans, while nurse navigators help patients and families manage appointments, understand treatment options, and access supportive resources. JPS also offers nutrition counseling, social work support, and survivorship programs, addressing the physical, emotional, and practical needs of patients at every stage of their journey.

Behavioral Health & Psychiatry

As the largest provider of behavioral health services in Tarrant County, JPS delivers expert care for adults and adolescents through both inpatient and outpatient programs, with outpatient support also available for children. JPS operates Tarrant County's only Psychiatric Emergency Center and offers a full continuum of behavioral health care—including inpatient services at Trinity Springs Pavilion, partial hospitalization, intensive outpatient programs, and integrated behavioral health at clinics across the network.

Women's & Neonatal Services

As a designated Level IV Maternal Care facility, JPS offers comprehensive care for every birthing experience—from low-intervention deliveries to advanced, coordinated care for patients with complex medical needs. Each year, JPS delivers about 5,000 babies and provides high-risk infant care in its Level III Neonatal Intensive Care Unit (NICU). Women's Health services extend well beyond labor and delivery, with outpatient centers located throughout Tarrant County offering full-spectrum gynecologic care. From preventive screenings and contraception to menopause management and complex GYN procedures, JPS supports women

through every stage of life with compassionate, expert care.

Cardiopulmonary Care

JPS delivers comprehensive care for heart and lung health through coordinated inpatient, outpatient, and specialty services. Designated as a Certified Chest Pain Center, JPS provides rapid, evidence-based treatment for heart attacks and cardiac emergencies, with national recognition for high performance in heart failure and heart attack care. Pulmonary specialists treat COPD, pneumonia, asthma, and other respiratory conditions, supported by respiratory therapists and sleep medicine experts. Advanced diagnostics include robotic-assisted lung biopsies with the Ion system, enabling earlier and more precise detection of lung disease.

Neurology & Stroke Care

Stroke patients receive timely, specialized care at the Certified Primary Stroke Center, where advanced imaging and a dedicated stroke response team ensure rapid intervention. The program earned Gold Plus Recognition from the American Heart Association and American Stroke Association in 2025.

Endocrinology & Diabetes Management

Specialty care for diabetes and endocrine disorders is delivered through the JPS Medicine Specialty Clinic, with a focus on diagnosis, education, and long-term disease management. Patients receive personalized support to manage complex conditions in both outpatient and continuity care settings.

Orthopedics, Podiatry & Sports Medicine

JPS provides expert care for joint, bone, and musculoskeletal injuries—ranging from trauma and fracture management to total joint replacement, sports injury recovery, and comprehensive

sports medicine services. The Orthopedic Surgery department includes one of the nation's top hospital-based podiatry residency programs, where residents perform a high volume of foot and ankle surgeries in a teaching environment emphasizing surgical depth and autonomy. JPS sports medicine physicians serve as trusted providers for 10 high schools and 3 universities, delivering sideline coverage, injury prevention, and coordinated treatment for student-athletes. Outpatient rehabilitation and physical therapy services further support recovery, mobility, and a safe return to activity.

Surgical Services

Through its main hospital and outpatient surgery centers, JPS delivers a full range of surgical care—including general, minimally invasive, trauma, and specialized procedures. Surgical services are backed by advanced technology, coordinated pre- and post-op care, and residency programs in general surgery, orthopedics, OB/GYN, and more.





Transforming Lives Across Tarrant County

Every patient story reflects the heart of our mission—delivering exceptional care that makes a lasting difference in the lives of those we serve.

“JPS was my strength, I always knew I could count on them.”

JPS Was My Strength: One Patient’s Story of Survival

Life can change in an instant. One day feels routine, the next, you’re facing a crisis that turns everything upside down. That’s what happened to Eric Marazzi, a lifelong hard worker whose world was shaken by a cancer diagnosis. With his health declining and his livelihood slipping away, Eric found strength through faith, family, and care from the team at JPS Health Network.

“When all of this started, I had no clue what was going on,” Eric said. “I had to stop working every 15 minutes to try to use the bathroom, but I couldn’t. It got pretty bad.”

After first experiencing severe pain and urinary issues, Eric visited a nearby emergency room where he was diagnosed with diverticulitis and sent home with antibiotics. But as the weeks went on, his symptoms worsened. While on the way to visit his daughter, the pain became so severe that he stopped at another emergency room. There, additional tests were run, a catheter was placed, and he was advised to see a urologist — a recommendation that ultimately led him to JPS.

He came to JPS, where tests revealed a PSA level of 21 — more than five times the normal level. He was diagnosed with stage 4A prostate cancer. The disease had spread to nearby lymph nodes but not distant organs. “Eric had high-risk, high-grade prostate cancer with a high chance of recurrence,” said Muhammad Isa, MD, his JPS oncologist. “Surgery was recommended as a curative option, and he had a strong chance of fighting it.”

Eric underwent surgery to remove his prostate, which turned out to be more extensive than expected. The cancer had begun spreading toward his bladder, requiring deeper excision.

“I thought I’d be back on my feet in a couple of weeks, but it took over a month,” he said. “I couldn’t work, didn’t get a paycheck, and I lost everything. But JPS kept me going. This place has been great.”

As his recovery continued, Eric began radiation therapy with the JPS Oncology & Infusion Center team. Emotionally and physically drained, he struggled to accept that he still couldn’t return to work. But he found support in the kindness and consistency of his care team.

“They showed me they cared. Every visit, they talked to me. I felt like I mattered,” Eric said. “This place and these people are a blessing.”

The JPS team helped Eric stay grounded. Every part of his treatment plan was explained clearly. Every question had an answer. Most importantly, he never felt alone.

“JPS was my strength,” he said. “I always knew I could count on them.”

Despite losing his job, his home, and most of his belongings, Eric refused to give up. With support from his sister and care from JPS, he began rebuilding.

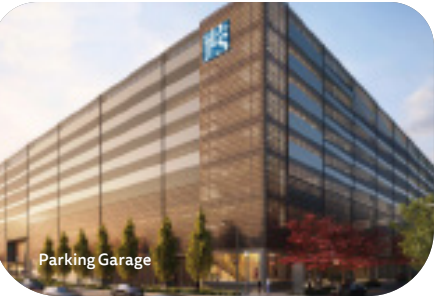
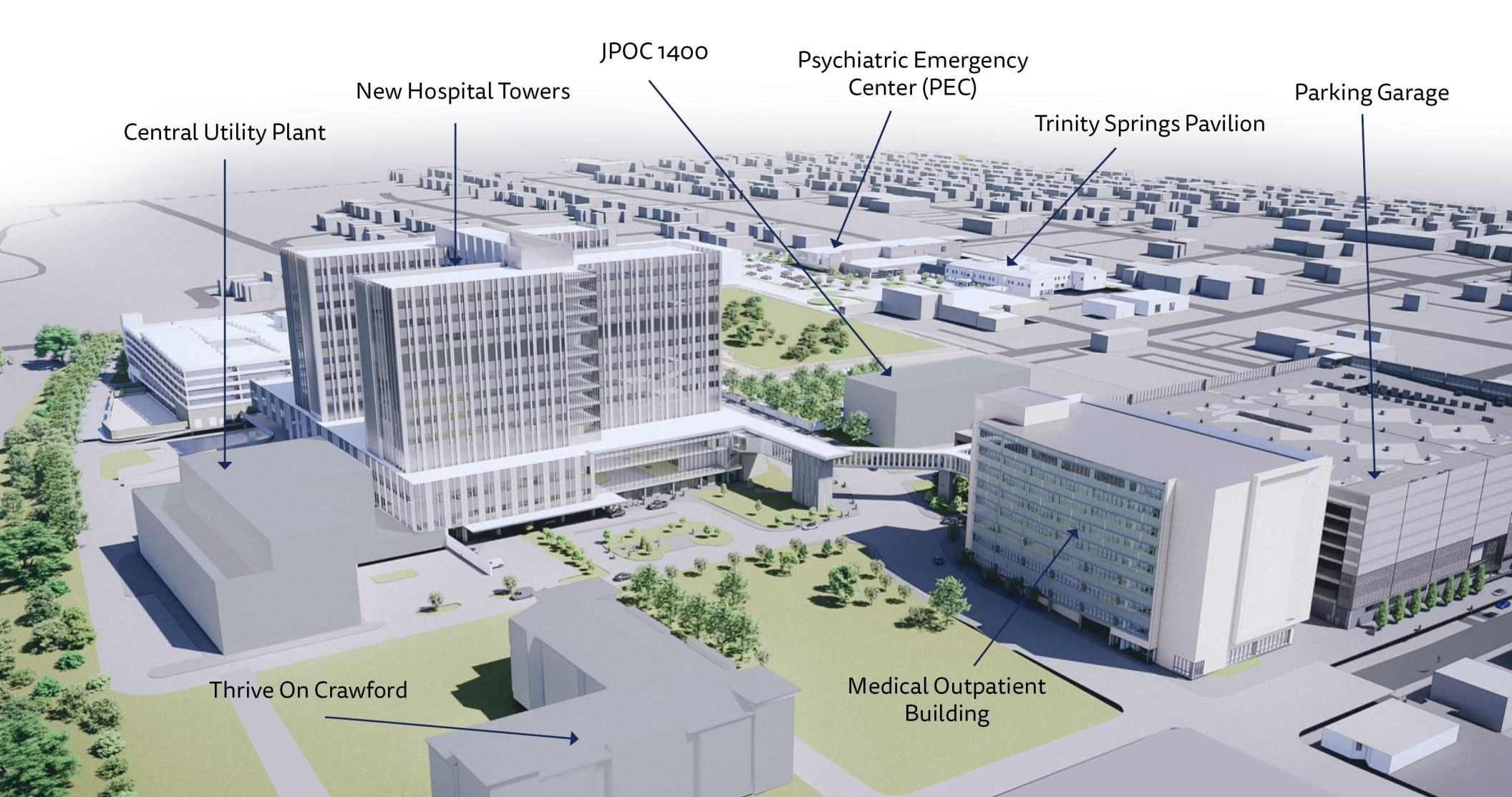
“I leaned on my faith, the resources at JPS, and the support of the people around me,” he said. “Slowly, things started coming together.”

After a full year of treatment, Eric reached a major milestone: he rang the bell at the OIC, marking the end of his radiation therapy. It was a moment filled with emotion.

“Ringing that bell made me feel victorious,” he said. “After everything I’d gone through, I had won.”

Today, Eric is completing maintenance therapy. He’s working again, living independently, and rebuilding the life he wants to live. He hopes his story encourages others to keep fighting through their own challenges.

“I did my best not to let this diagnosis rule my life,” he said. “Now, I get to serve this community. I hope others hear my story and know they can keep going, too.”



The JPS Health Network Master Facility Plan is a bold, multi-year investment in the future of care for Tarrant County. Across the region, new spaces are taking shape. Each one is designed to enhance how, where, and when care is delivered.

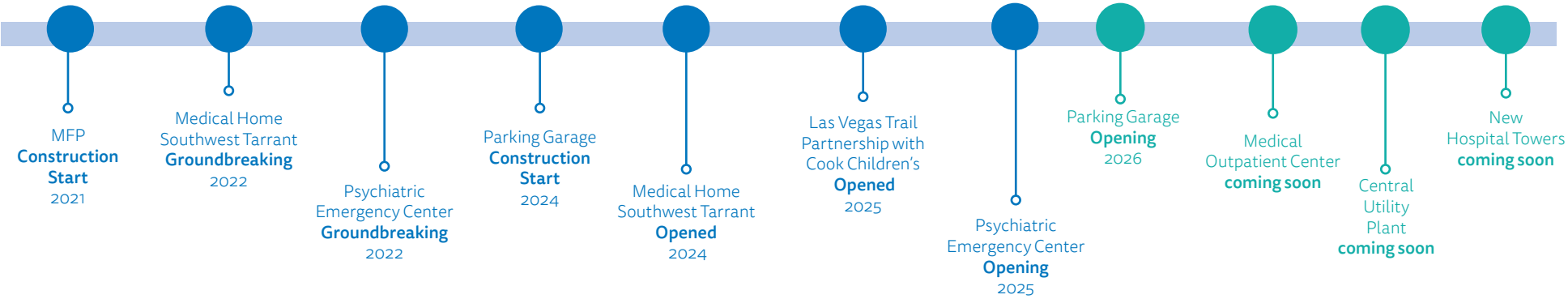
Informed by input from patients, staff, and community leaders, the plan is expanding access to services, increasing emergency and behavioral health capacity, and improving the care experience through environments that reflect the dignity every patient deserves. Rooted in human-centered design, each project supports JPS's commitment to delivering exceptional care close to home.

Key developments include the newly opened Medical Home Southwest Tarrant and the relocated Psychiatric Emergency Center, which was purpose-built to provide a more therapeutic environment for those in crisis. A new multi-level parking garage will improve access to the main campus. In the years ahead, JPS will open a state-of-the-art Medical Outpatient Building, a Central Utility Plant to support system growth, an expanded Pavilion North, and a new hospital scheduled to open in 2030.

These investments reflect a vision for healthcare that is accessible, respectful, and designed to meet the evolving needs of our community, now and for generations to come.

Transforming Healing Environments

The Master Facility Plan for JPS Health Network is fully underway. New JPS Hospital Towers will be the centerpiece of a reimagined campus—designed to expand access, elevate the patient experience, and set a new standard for healthcare in Tarrant County.





Transforming Innovation

JPS Health Network is at the forefront of healthcare innovation, utilizing cutting-edge technology to enhance patient outcomes.

Advancing Lung Cancer Care with Robotic Precision

The Ion Robotic Bronchoscopy system is helping JPS detect lung cancer earlier by enabling physicians to biopsy smaller nodules with greater accuracy. Previously, providers had to wait for nodules to grow before biopsy—delaying diagnosis and treatment. Now, more patients are diagnosed earlier, improving survival and quality of life. Led by Dr. Patel, a fellowship-trained interventional pulmonologist, this advanced procedure is part of the Comprehensive Interventional Pulmonary Program—one of the few of its kind in Texas. In 2024, JPS completed more than 200 procedures and reduced diagnosis time to just 15 days, helping patients start treatment sooner and with greater confidence.

Enhancing the Digital Patient Experience

JPS is transforming how patients connect to care. Through telemedicine, digital check-ins, online scheduling, and e-visits, patients now access services more easily and securely. Expanded MyChart features help them stay engaged in their care between visits.

Innovating Diagnostics Through Digital Pathology

JPS now provides 100 percent digital pathology for surgical cases—accelerating diagnosis while enhancing precision. Biopsy reporting times have dropped from three days to one, and pathologists can analyze images remotely for faster, more collaborative decisions. Integrated AI tools help identify patterns that support earlier, more accurate treatment.

Strengthening Security with Smart Technology

JPS has implemented ZeroEyes' AI-based gun detection platform across its hospital and outpatient clinics to enhance safety and support rapid response. The system works through existing security cameras to detect visible firearms in real time. Verified alerts are reviewed by trained military and law enforcement personnel and sent to hospital police in three to five seconds. This technology reinforces JPS's commitment to protecting patients, staff, and visitors—and helps create a safer environment for care across Tarrant County.

"At JPS, innovation is about practical solutions that improve patient care. Whether it's robotic bronchoscopy or digital pathology, we're using tools that give our patients answers faster and improve outcomes every day."

- Saba Asad, MD, SVP, Interim Chief Medical Officer





Transforming Excellence into National Recognition

These key achievements highlight our commitment to quality, innovation, and community impact. Through strategic advancements in technology, workforce engagement, and patient-centered care, we continue to redefine excellence in healthcare delivery.

Excellence You Can Trust

At JPS Health Network, excellence is not a label we give ourselves—it is earned through the trust of our patients, the validation of respected accrediting bodies, and recognition from professional and community organizations. From trauma care to stroke response, from nursing excellence to workplace culture, these honors demonstrate our commitment to the highest standards of safety, quality, and performance.

Our national accreditations confirm that JPS meets or exceeds rigorous benchmarks set by leading organizations, while our awards and honors reflect the dedication of our team and the trust of our community. Together, they represent more than a badge or title—they are a promise to deliver exceptional care across every service and setting, putting patients and families first.

Key Recognitions:







Transforming Learning into Lifelong Impact

At JPS, Academic Affairs leads the charge in advancing medical education through robust residency and fellowship programs, interdisciplinary training, and hands-on clinical experience. By shaping the next generation of healthcare professionals, Academic Affairs ensures that learning translates into lasting impact for patients, providers, and the community.

Shaping Future Caregivers

As a teaching hospital, JPS provides a unique environment for hands-on learning, equipping residents with the skills needed to deliver compassionate, comprehensive care to our patient population.

JPS leads more than a dozen residency and fellowship programs that prepare the next generation of caregivers to serve with skill, compassion, and purpose. Our Family Medicine Residency, the largest in the nation, was ranked number one in both the 202/2025 and the 2025/2026 Doximity Residency Navigator, reflecting our commitment to clinical excellence. In addition to physician training, JPS offers accredited residency programs in nursing, pharmacy, and allied health. These programs provide immersive, hands-on learning in high-acuity environments, equipping clinicians to meet the diverse and complex needs of our community. Through this investment in education, JPS strengthens the healthcare workforce and advances our mission to transform healthcare delivery for the communities we serve.



We train over 200 resident physicians annually through our sponsored residency and fellowship programs:

- Emergency Medicine Residency
- Family Medicine Residency
- Geriatric Medicine Fellowship
- Obstetrics and Gynecology Residency
- Oral and Maxillofacial Surgery Internship
- Orthopaedic Surgery Residency

- Podiatry Residency
- Psychiatry Residency
- Sports Medicine Fellowship
- Transitional Year Residency

Additionally, JPS serves as an integrated training site for:

- General Surgery Residents (Baylor University Medical Center-Dallas)
- Ophthalmology residents (UT Southwestern-Dallas)

- Oral and Maxillofacial Surgery Residents (UT Southwestern-Dallas)
- Urology Residents (UT Southwestern-Dallas)

We also actively engage in the clinical education and training of multiple medical, physician assistant, pharmacy, nursing and allied health students.

"At JPS, academic excellence is core to our mission. Through hands-on, real-world training, we are preparing the next generation of healthcare professionals and building a workforce that reflects the values of compassion and innovation in every patient encounter."

— Tricia Elliott, MD, Senior Vice President of Academic and Research Affairs





Transforming Talent into Purpose-Driven Care

At JPS Health Network, our people are the foundation of every success. From the front lines of patient care to the essential roles behind the scenes, each team member brings purpose and passion to their work. We are proud to be one of the largest employers in Tarrant County, offering stable, meaningful careers that support both our mission and our community.

A Culture That Inspires



7,200+
JPS HEALTH
TEAM MEMBERS



2,450+
NURSES AT JPS
NETWORK



250+
PROVIDER RESIDENTS
& FELLOWS



1330+
MEDICAL STAFF &
ADVANCED PRACTICE
PROVIDERS

“When I came to the U.S., JPS gave me hope during one of the most difficult times in my life. While pregnant and struggling to access care, I was met with compassion, understanding, and a nurse whose kindness changed everything. She made me feel seen, valued, and safe. That experience didn’t just restore my health — it inspired me to become a nurse so I could give others the same care and encouragement that changed my life. JPS didn’t just care for me — it helped me find my purpose.”

— Caroline Ndirangu, Licensed Vocational Nurse



In both 2024 and 2025, JPS received the Gallup Exceptional Workplace Award, earned by fewer than 50 organizations worldwide. This recognition reflects our commitment to building a workplace where team members feel heard, supported, and valued.

Our culture is shaped by connection, purpose, and shared goals. Every role at JPS contributes to better care and a stronger Tarrant County.

At JPS, engagement goes beyond satisfaction. It means team members feel a sense of purpose in their work and connection to the patients and communities they serve. Through leadership rounding, pulse surveys, and recognition programs, we create space for listening, celebrating, and improving together. This focus on engagement fosters collaboration, drives innovation, and ensures that our team is equipped and inspired to deliver exceptional care every day.

Developing Tomorrow's Healthcare Leaders

JPS is growing tomorrow's healthcare leaders through hands-on training, mentorship, and career pathways that reflect our values and mission.

Building the Pipeline for the Future



Workforce development is a cornerstone of our long-term strategy at JPS. In 2024 and 2025, we enhanced onboarding, expanded continuing education, and introduced innovative programs to prepare emerging leaders across the network.

Our clinical training programs—including nurse residency, pharmacy residency, and allied health residencies—equip providers with the expertise to deliver exceptional care. We partner with area schools, universities, and workforce agencies to strengthen the regional talent pipeline and expand access to healthcare careers.



The Administrative Fellowship Program offers recent graduates an immersive, full-time experience in hospital operations, strategy, and leadership. Fellows and Administrative Interns work closely with executive leaders, contributing to high-impact projects and gaining real-world insight into the complexities of healthcare delivery at scale.

Through youth-focused initiatives like Future Healthcare Heroes and the SHINE program (Students in Healthcare for Individual Empowerment), we inspire middle and high school students to explore healthcare careers. SHINE provides a paid, eight-week internship where



participants gain hands-on experience in clinical and non-clinical roles, earn certifications such as Patient Care Technician, Phlebotomy, and Health Information Management, and learn directly from JPS professionals.

"This experience gave me more than skills—it gave me purpose," said Debra-Jul Akanmu, a 2025 SHINE participant. "I now know the kind of provider I want to be: someone who listens, learns, and puts patients first."

Caring for our team is essential to caring for our patients. We are building a workforce rooted in excellence, compassion, and a deep commitment to serving Tarrant County.



Transforming Mission into Economic Momentum

Economic Impact: Investing in Tarrant County's Future

JPS Health Network is a powerful engine for economic growth in Tarrant County. As one of the region's largest employers—with more than 7,200 team members—JPS fuels career advancement, local spending, and workforce development across healthcare and support services.

Our impact extends beyond jobs. The salaries and wages paid to JPS employees generate millions in local economic activity—supporting housing, retail, childcare, dining, and small businesses throughout the region. JPS also invests in infrastructure, education, and partnerships that strengthen the local economy. The voter-approved Master Facility Plan is generating construction jobs, vendor opportunities, and long-term improvements in care access—injecting millions into the region.

Through workforce training, infrastructure growth, and everyday consumer activity, JPS is helping build a healthier, more resilient, and economically vibrant Tarrant County.

"JPS Health Network is a major economic driver in Tarrant County, creating jobs, developing talent, and investing in infrastructure that strengthens our region."

- Steve Montgomery, President & CEO,
Fort Worth Chamber of Commerce





Transforming Partnership into Healthier Communities

Community Outreach supports JPS' mission of transforming healthcare by strengthening connections within Tarrant County and beyond, focusing on building partnerships, participating in community events, and implementing programs that improve the health and well-being of local residents. These efforts help create lasting impact by addressing community needs and fostering collaboration both internally and externally to the network.

Caring for Tarrant County Communities

Thrive on Crawford: Currently under construction at Crawford Street and West Magnolia Avenue, this partnership between JPS and The NRP Group brings together affordable housing and access to care. The development includes 67 affordable units and 14 market-rate units, along with support services such as job readiness, financial literacy, education, and healthcare screenings to promote long-term stability.

Casa de Esperanza is a permanent supportive housing community that helps individuals experiencing homelessness regain stability, security, and access to care. JPS Health Network partnered with several local organizations to bring healthcare into this residential setting, embedding Community Health Workers



on-site to connect residents with primary care, prescriptions, and coverage support. By integrating housing and health, Casa de Esperanza reduces reliance on emergency care and builds a path toward long-term well-being. With 119 residents now housed and emergency room visits cut in half, the program is a model for how coordinated support can transform lives and strengthen communities.

Food Rx Program: Addressing food insecurity as a healthcare issue by providing healthy groceries prescribed by JPS providers. In partnership with local food banks and community organizations, this program helps patients manage chronic conditions and improve overall health through better nutrition

Sound Care: Created in partnership with Hear Fort Worth, this program connects local musicians with affordable healthcare and support services like JPS Connection. By helping artists access care, JPS supports the health and vitality of Fort Worth's creative community.

Street Medicine

JPS brings primary care directly to unsheltered residents across Tarrant County, because everyone deserves access to high-quality care. Acclaim Street Medicine was the first local program of its kind and the first in the U.S. to integrate a family medicine residency focused on this vulnerable population.



Las Vegas Trail Health Center

The new Las Vegas Trail Neighborhood Health Center is a 40,000-square-foot facility developed through a partnership between JPS Health Network, Cook Children's Health Care System, the City of Fort Worth, LVT Rise, and other community organizations. Located at 2800 S. Cherry Lane, the center is expanding access to primary care, women's health, behavioral health, and social services for families in the 76116 zip code.

Alongside JPS and Cook Children's clinics, the center also house a food pantry, nutrition kitchen, job training programs, and other vital community resources—all under one roof!

Transforming Giving into Impact

The JPS Foundation connects community generosity with the mission of JPS Health Network, helping expand access, enhance patient experiences, and support innovation across the network. Through philanthropic giving, the Foundation funds critical programs, capital projects, and patient support services that extend the reach and impact of care. Signature events like the White Coat Gala celebrate the power of giving — with the 2024 event raising nearly \$500,000 to advance lifesaving programs and improve the health of Tarrant County.

Philanthropic gifts to the JPS Foundation make a real and lasting impact—helping fund programs that remove barriers, improve health outcomes, and bring care to those who need it most.

Maternal and Infant Health

Foundation support helps expand access to high-quality prenatal, delivery, and postnatal care—improving outcomes for mothers and babies across Tarrant County and addressing disparities in maternal health.

Street Medicine

Through philanthropy, JPS brings healthcare directly to people experiencing unsheltered homelessness. The Acclaim Street Medicine program connects patients to primary care, behavioral health, and essential support services.

Behavioral Health Access

Donor contributions help expand behavioral health services, providing care and connection for individuals facing mental health and substance use challenges, including crisis intervention and outpatient support.

Chronic Disease Management

Foundation-funded programs help patients manage diabetes, heart disease, and other chronic conditions through screenings, medication access, and health education—promoting long-term wellness.

Food as Medicine

Philanthropy supports initiatives like the Food Rx program, which helps patients access nutritious groceries and learn healthy habits that support chronic disease management and overall well-being.

Cancer Navigation and Support

Foundation dollars provide resources for patients navigating cancer diagnoses, from access to advanced screenings to transportation, education, and survivorship support.

Health Literacy and Community Education

By supporting classes and outreach programs, the Foundation helps patients and families make informed decisions, manage their care, and build confidence navigating the healthcare system.

To support JPS, visit jpsfoundation.org/donate or scan the QR code. Every gift matters. Every patient matters.



Donor Spotlight

Mei-Yi Lee is a Behavioral Health Nurse at JPS and has dedicated over 30 years to the organization. As a lifelong resident of Tarrant County, Mei-Yi holds a deep affection for JPS. She values loving kindness, compassion, and joy.

“In life, there are many challenges and stresses, such as illness, death, or mishaps, that make it difficult to find joy. I believe in the power of loving-kindness, compassion, and prayer. I do my part by contributing what I can to help those in need and relieve their suffering; it brings me happiness.” For many years, Mei-Yi has donated a portion of her paycheck annually. “I believe in the power of giving. The JPS Foundation supports people in need in Tarrant County, including our patients, their families, and JPS team members. I’m committed to sharing what I can and using my resources to help others.”



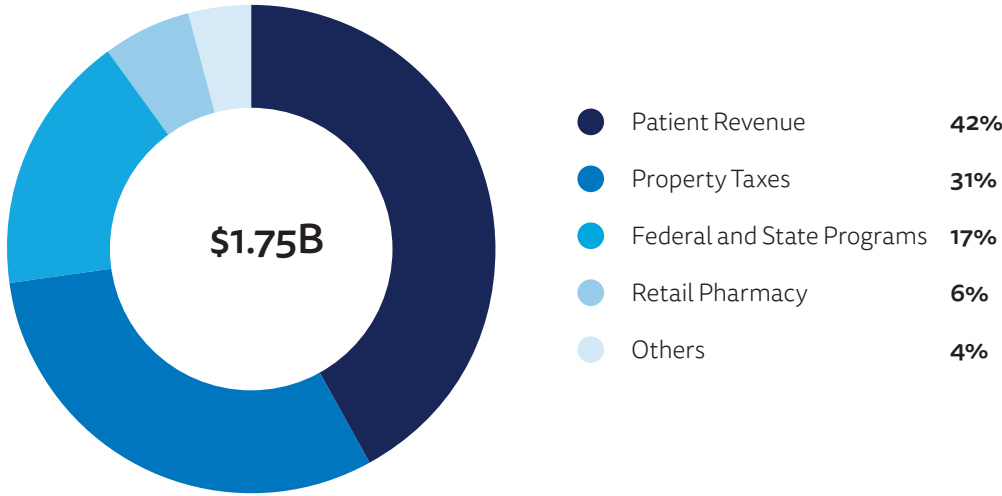


Transforming Community Investment into Meaning

Through strategic investments in innovation, infrastructure, and workforce development, JPS has continued to expand access to essential healthcare services across Tarrant County.

JPS By the Numbers

JPS Health Network plays a vital role in delivering accessible, high-quality care to the people of Tarrant County. We proudly serve everyone in our community—regardless of insurance status or ability to pay—ensuring that essential healthcare is never out of reach. As a publicly funded health network, JPS is accountable to the residents we serve. Our continued investment in care delivery, innovation, and infrastructure ensures we remain a trusted resource for Tarrant County today and into the future.



JPS Health Network, with an “AA” rating and stable outlook with Fitch, was named one of 10 health systems with strong operational metrics and solid financial positions, according to reports from credit rating agencies Fitch Ratings and Moody’s Investors Service released in 2025.

- Becker’s Hospital Review, January, 2025



FY24 Patient Encounters

Each year, JPS provides hundreds of thousands of patient encounters across inpatient, outpatient, emergency, behavioral health, and specialty services. This broad reach reflects our commitment to meeting patients where they are and supporting them throughout every stage of their health journey.

- 643,651 Community Health Visits
- 185,733 Hospital Patient Days
- 149,399 Total Emergency Visits
- 46,169 Urgent Care Visits
- 26,989 Geriatric Patients
- 17,601 Psych Emergency Visits
- 16,400 Total Surgeries
- 4,705 Babies Born
- 206 Languages Orally Translated

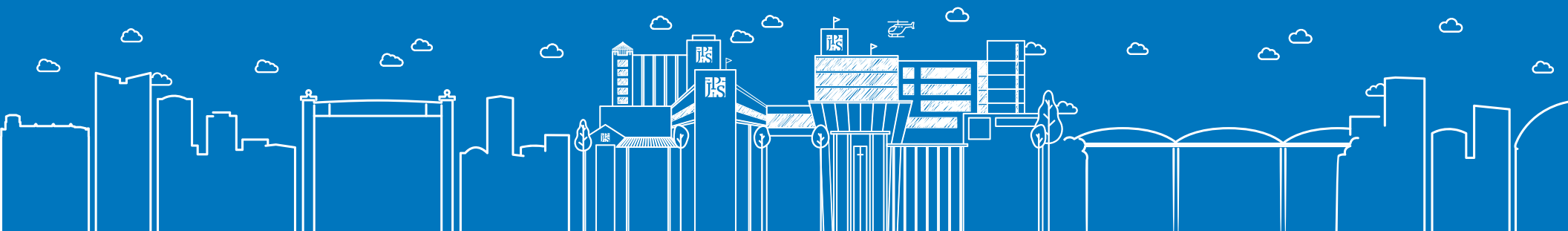


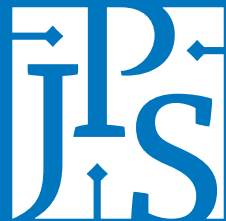
Transformed.

Looking ahead

Once complete, our Master Facility Plan will have transformed more than our campus. We will have transformed what is possible for healthcare in Tarrant County. These new spaces will fuel innovation, expand research, and create the environment for exceptional patient care. They will give our providers the tools to deliver breakthrough treatments, our learners opportunities to lead, and our community access to the highest standard of care close to home. The result will be more than new buildings. It will be new possibilities, better health outcomes, stronger connections, and a healthier future for all we serve.

The next chapter of healthcare isn't someday—it's already underway. And JPS is proud to lead the way.





JPS Health Network

Fort Worth, Texas

1500 S. Main Street
Fort Worth, TX 76104



[JPShealthnet.org](https://www.JPShealthnet.org)